

Global Pharma Engineering
iEP Competence Center

iEP
Presentation

Christoph Jauslin

Juni 2007



iEP
– **i**ntegrated **E**ngineering **P**latform –



Overview

Operating through 360 independent affiliates in 140 countries, Novartis offers its products and services through its Pharmaceuticals, Sandoz and Consumer Health divisions.



Novartis Pharmaceuticals

Novartis Pharmaceuticals focuses on the following therapeutic areas:

General Medicines

Cardiovascular & Metabolism, Neuroscience, Respiratory & Dermatology, AGBU (Arthritis, Gastrointestinal, Bone, Hormone replacement therapies, Infectious diseases)

Specialty Medicines

[Oncology](#) , [Transplantation & Immunology](#) and [Ophthalmics](#)



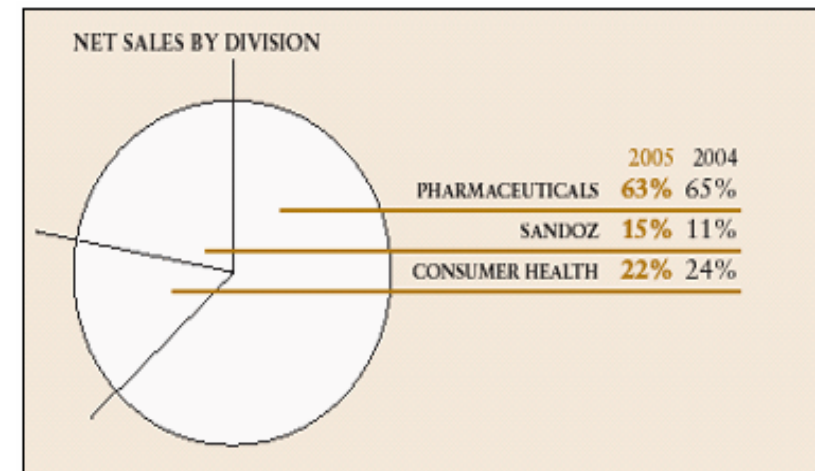
Sandoz

[Sandoz](#) is a leading global supplier of generic pharmaceuticals.



Novartis Consumer Health

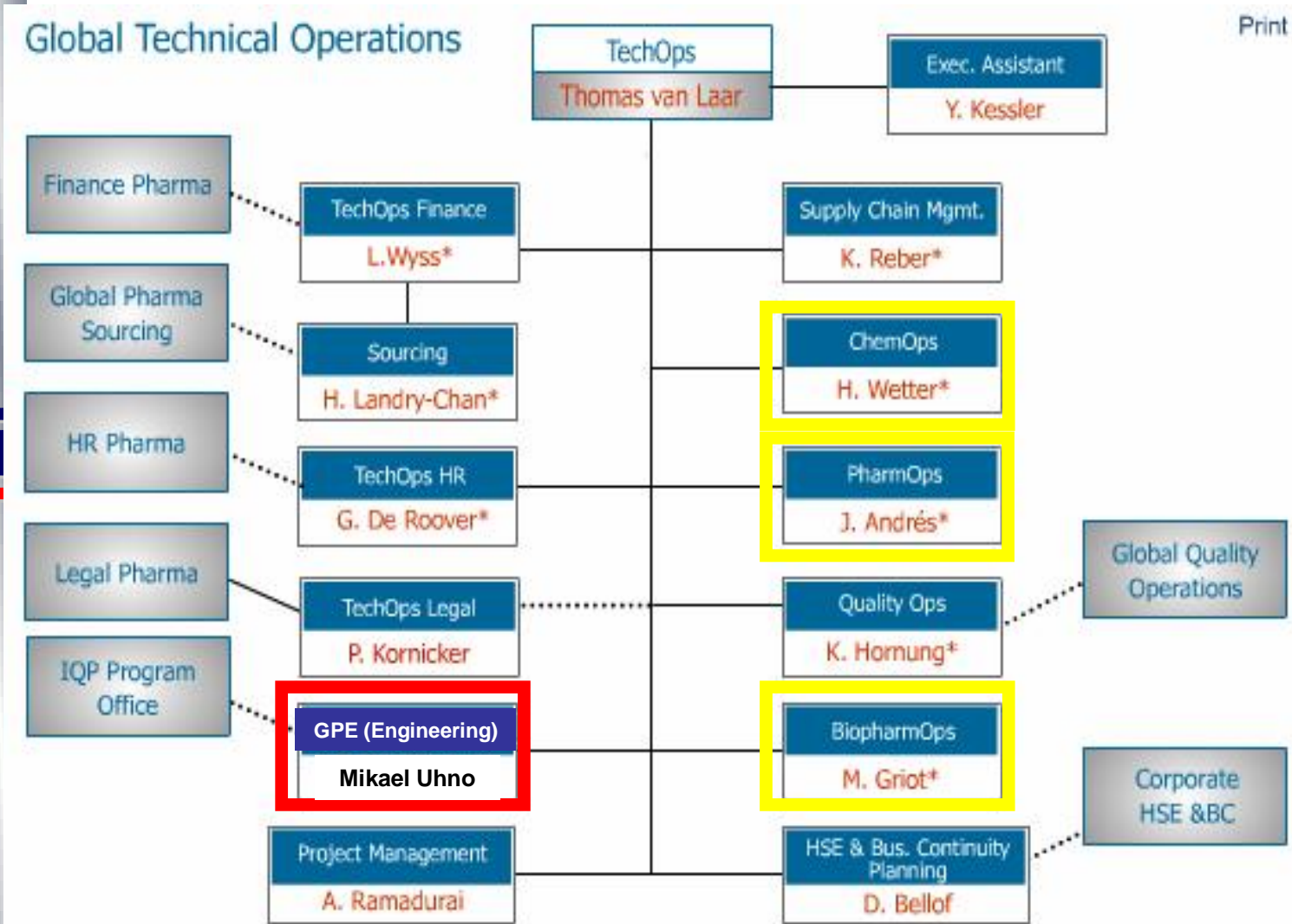
Novartis Consumer Health is comprised of the Business Units [Over the Counter \(OTC\)](#), [Animal Health](#), [Medical Nutrition](#), [Gerber](#), and [CIBA Vision](#).



- Vaccines and Diagnostics is a new division (April 2006) focused on the development of preventive treatments and tools. The division has two business units formed following the recent completion of the acquisition of Chiron Corporation: Novartis Vaccines, and Chiron, the blood testing and molecular diagnostics unit.

Global TechOps

iEP



IEP - Integrated Engineering Platform: What is it?

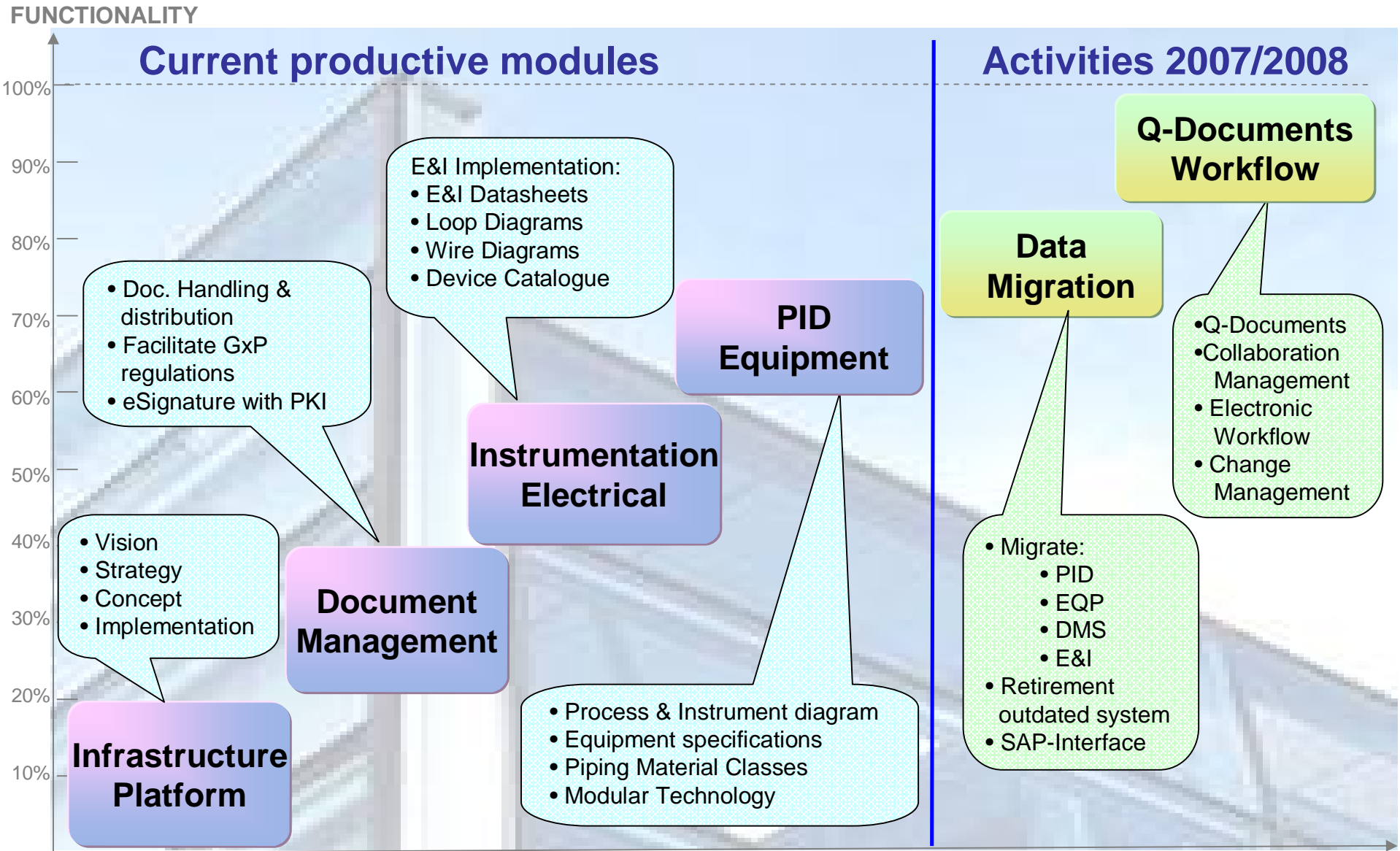
Definition:

- **IEP** is a global Engineering data & document management application.
- It is a tool for projects and it will be used by the plant operations during the entire lifecycle of an asset.

Support engineering objectives through:

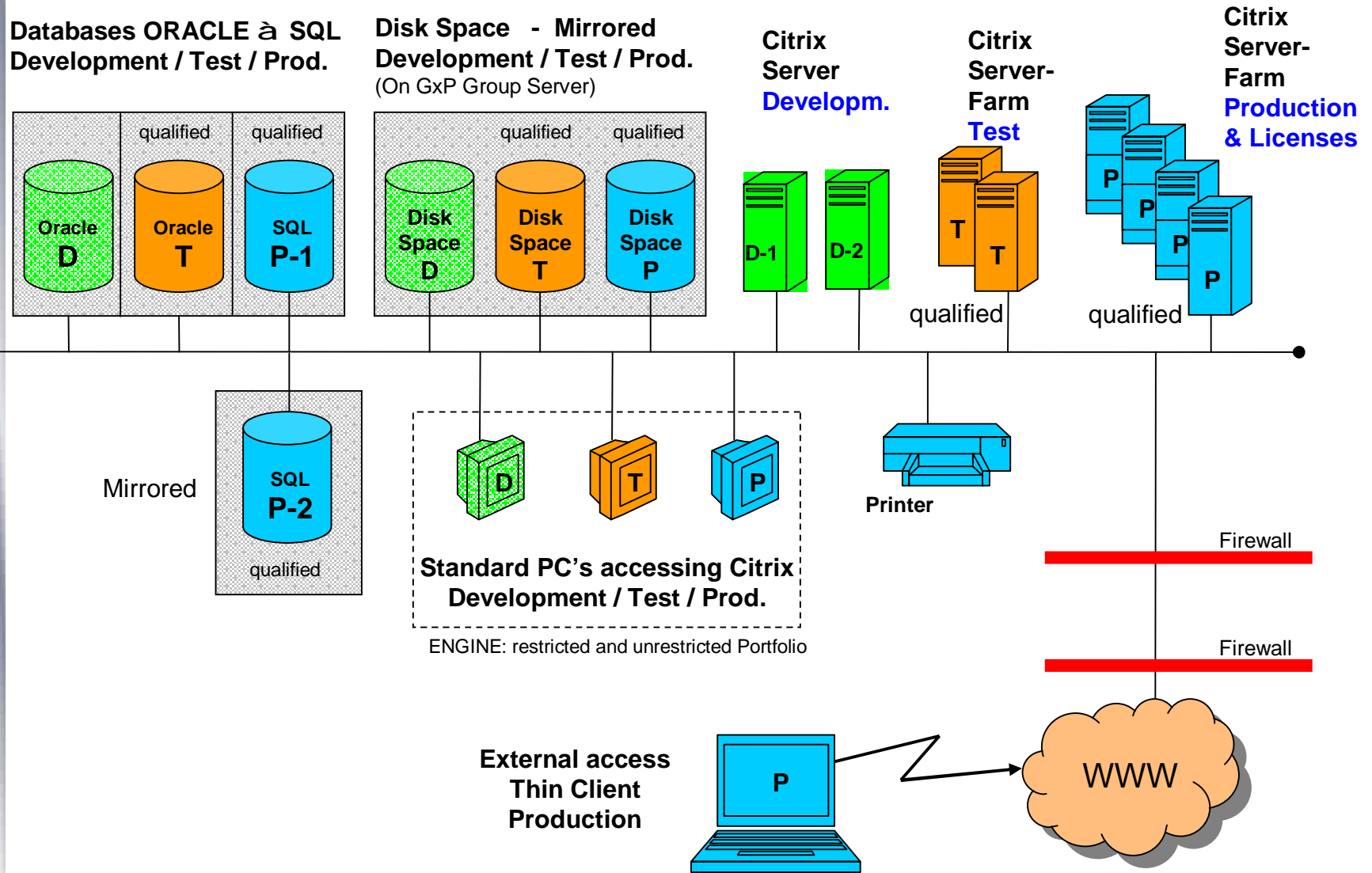
- Simplified engineering processes
- Collaborative global work environment
- Facilitation of best practice sharing (knowledge)
- Facilitation of compliance management
- Integrated system landscape
- Retirement of outdated applications

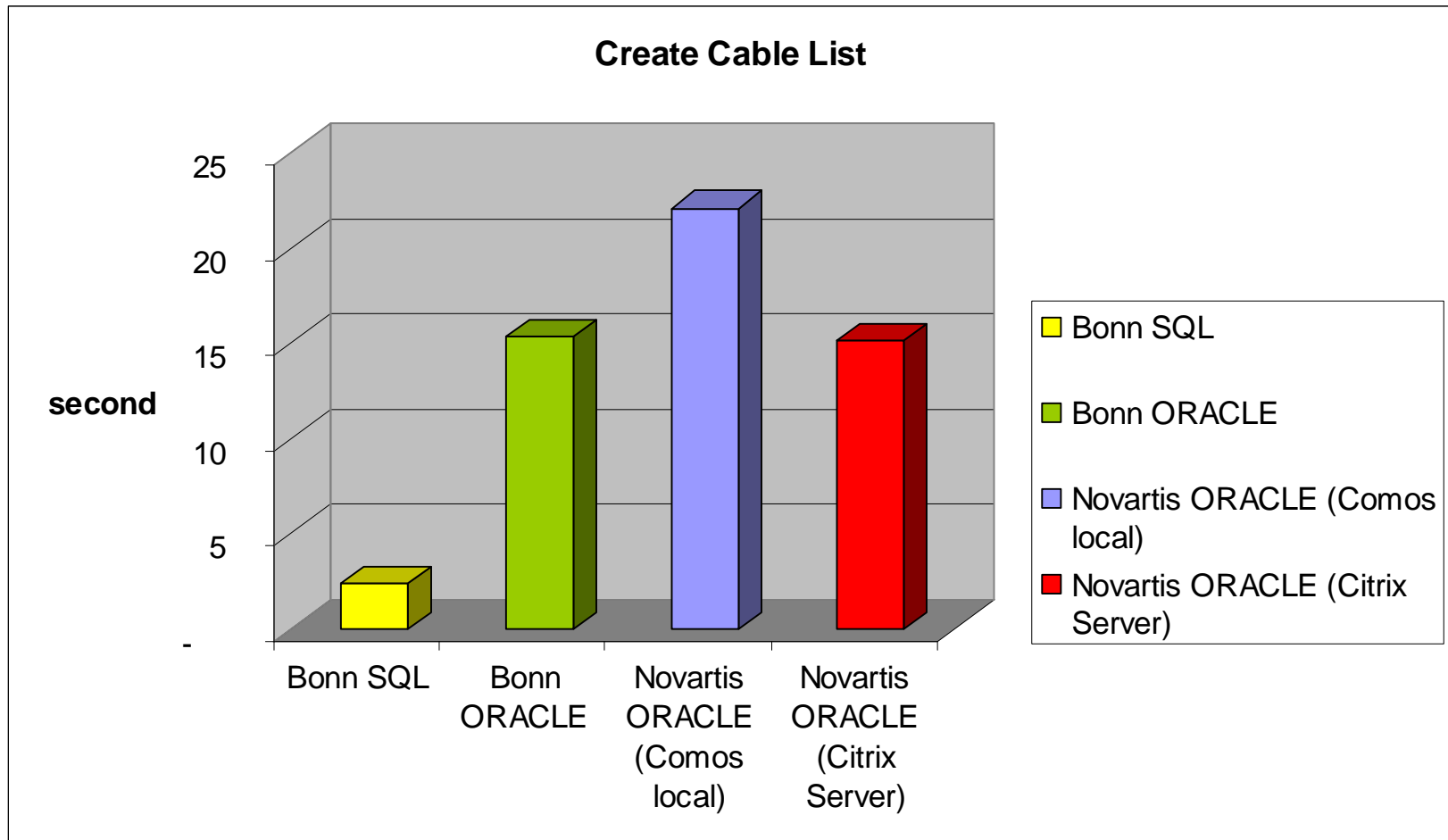
iEP – The Strategy

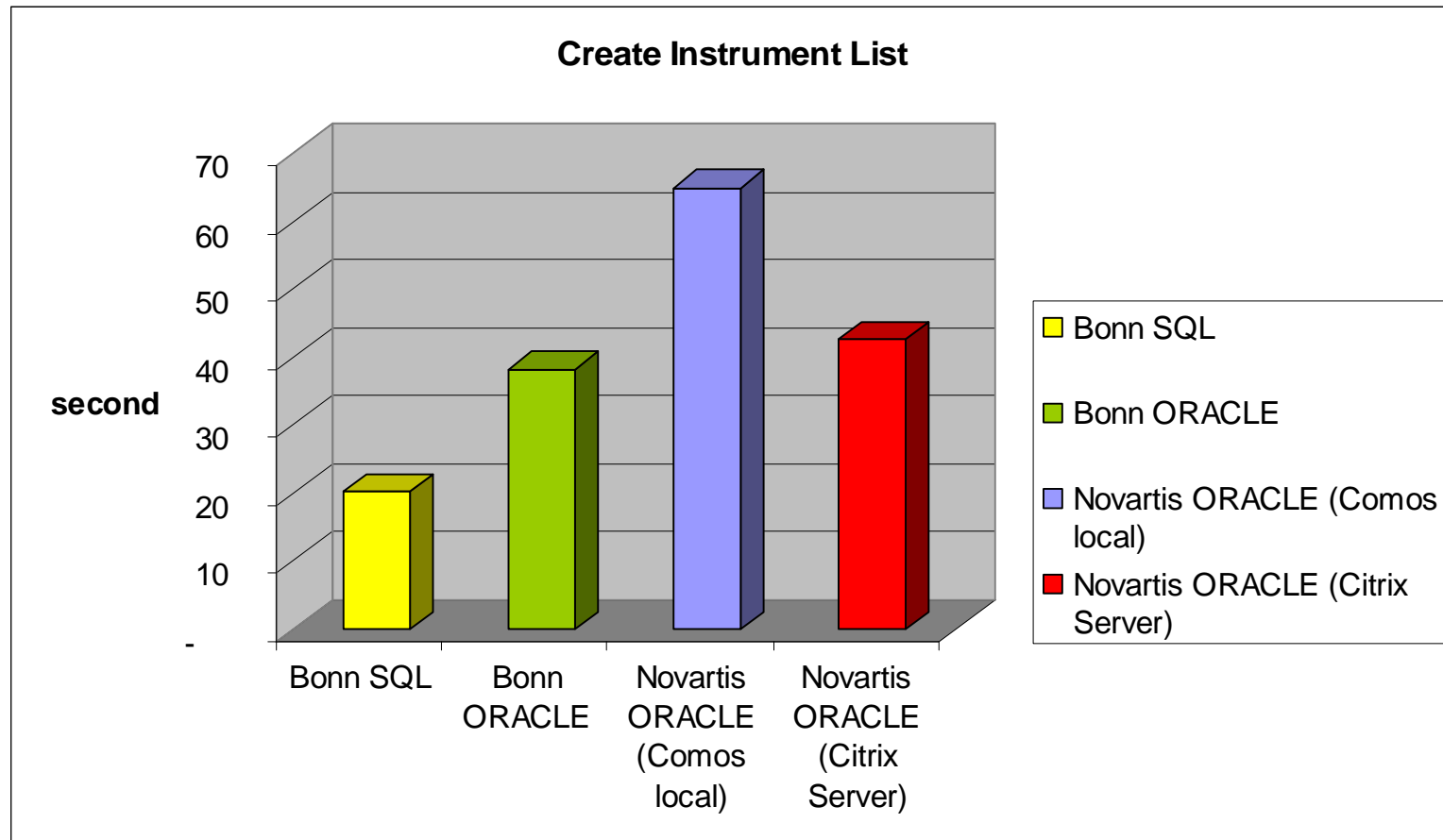


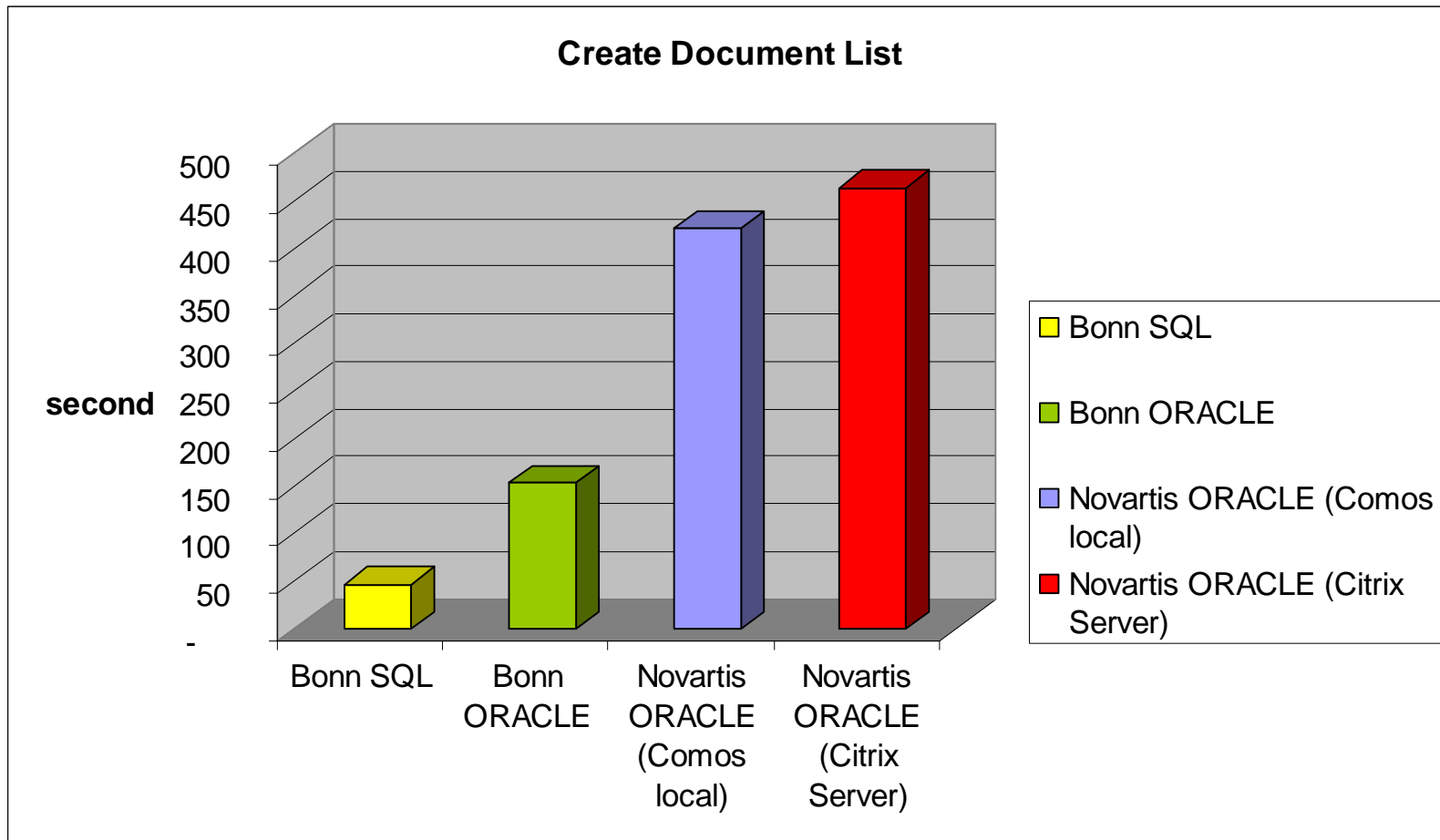
iEP: System Configuration

iEP

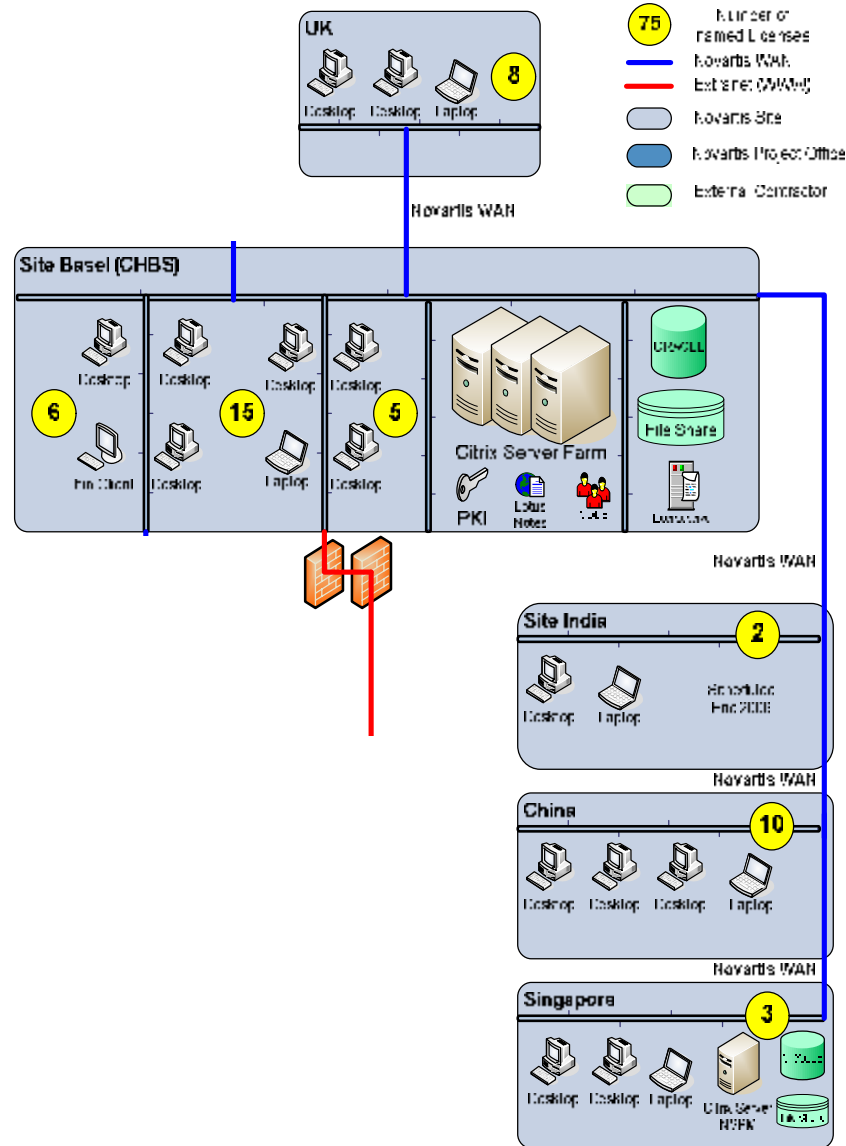








COMOS Global Network



Current configuration

IEP

Projects and Sites

UK

- Project 2005 Instruments : 17000
- Site Migration Loops: 8000
- Project 2006
- Project 2007

CH Site 1

- Project 2005 Instruments : 7000
- Project 2006 Loops: 5000

CH Site 2

- Project 2005 documents : 1500

China

- Project 2006

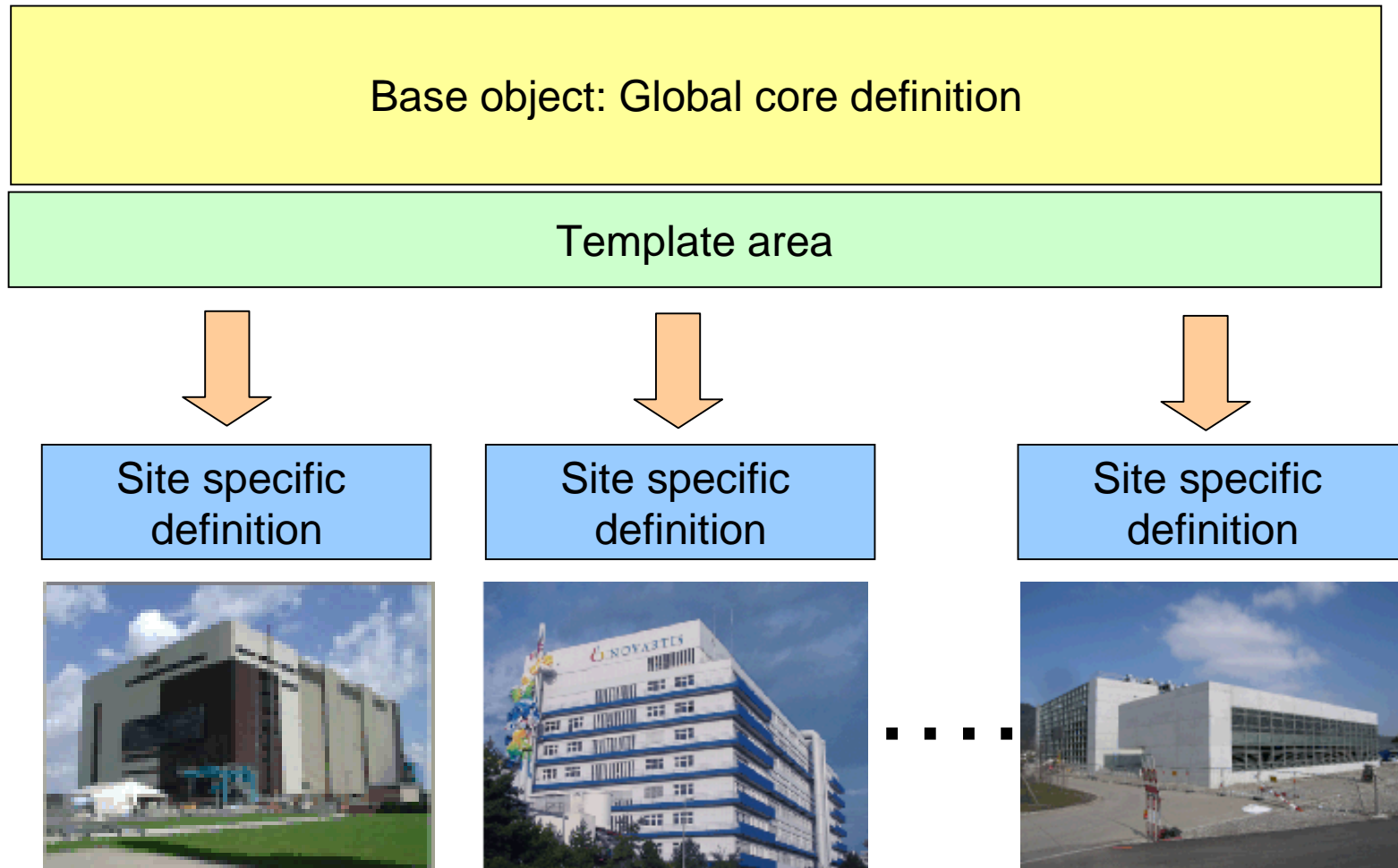
Singapore

- Project 2004

GPE (Modular Technology)



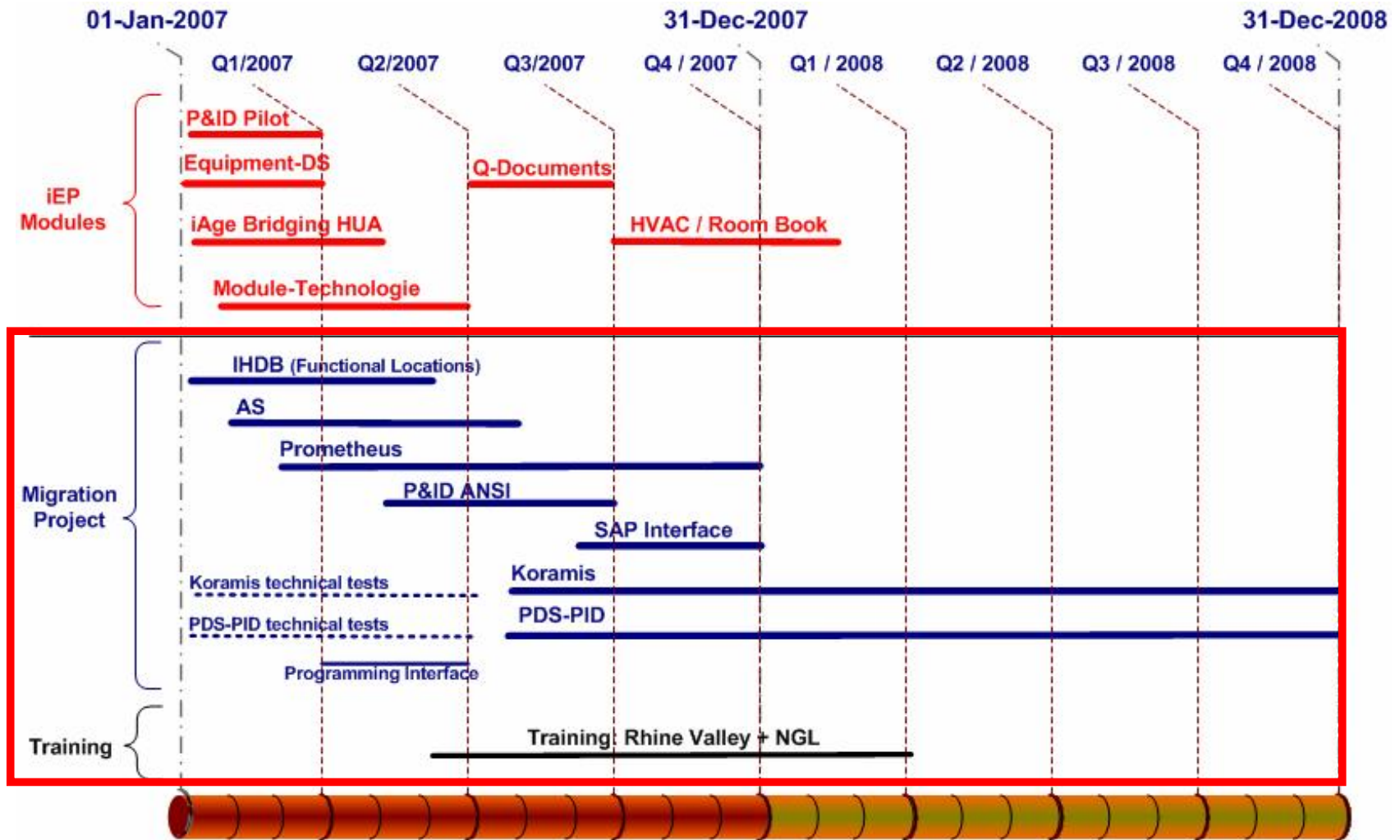
One site = one Comos project



Migration Project Rhine Valley & NGL

- **Transfer the data** of the following Engineering Application to the new iEP platform:
 - IHDB: Functional Locations (not preventive maintenance)
 - AS: Equipment datasheets
 - Koramis: E&I datasheets, loop diagrams
 - Prometheus: CAD drawings with Header data
 - PDS-PID: Process & Instrumentation diagrams
- **Retire** the 4 Engineering tools by latest end 2008:
 - AS, Prometheus (end 2007)
 - PDS-PID, Koramis (end 2008)
- Implement **PID-ANSI** and roll it out at NGL
- Implement Interface Comos to **SAP-PM**

Time schedule



iEP